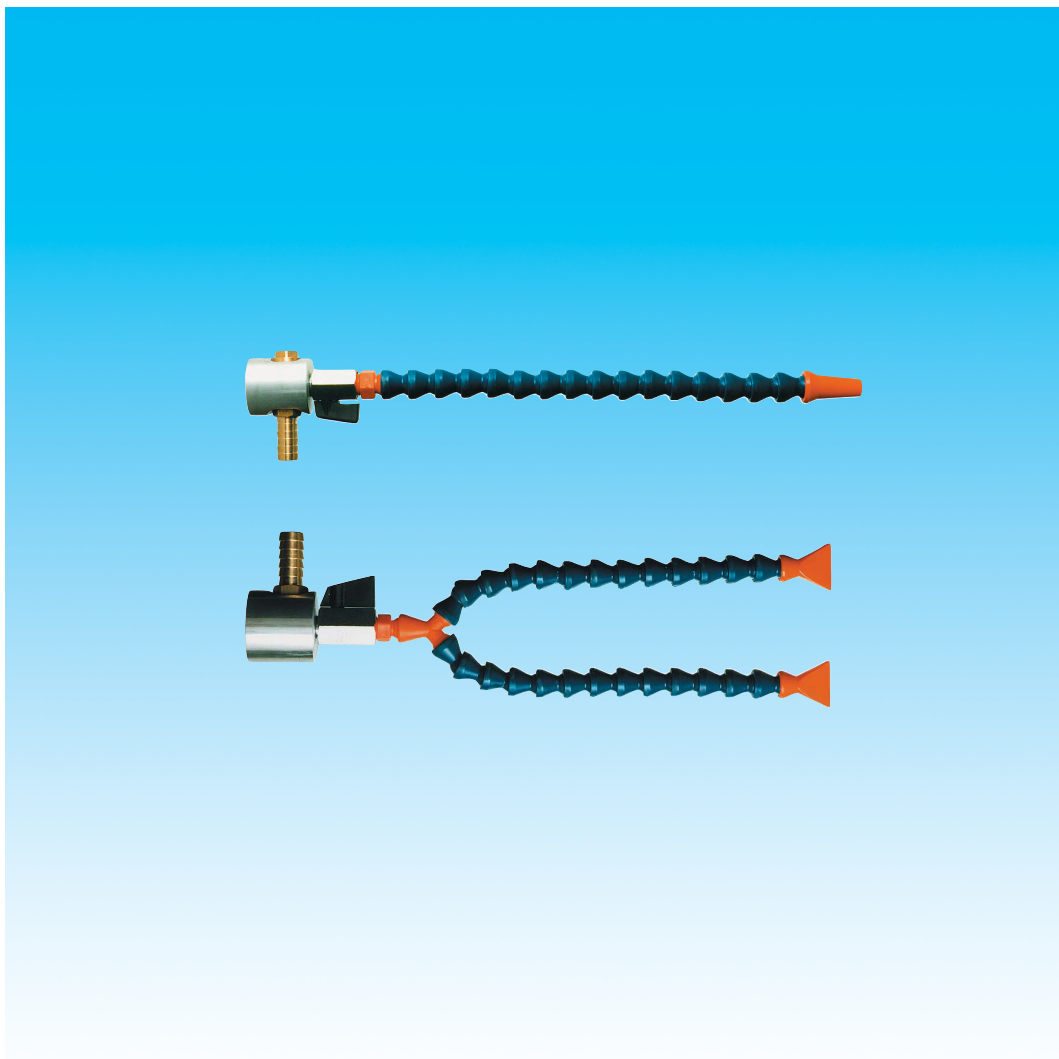


Dokumentation

Kühlmittel-Gelenkschlauchsystem

- Cool Line

- Typ CLS ... -



1. Inhalt

1. Inhaltsverzeichnis	1
2. Beschreibung	1
3. Artikelnummern und technische Daten	1
3.1 Typ CLS 141	1
3.2 Typ CLS 121	1
4. Abmessungen	2
4.1 Typ CLS 141	2
4.2 Typ CLS 121	3

2. Beschreibung

Das Gelenkschlauchsystem Cool-Line eignet sich zum Durchleiten von Petroleumprodukten, Kühlmitteln, Chemikalien sowie Dielektrikum von Errodiermaschinen.

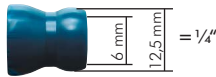
Das System umfasst ein umfangreiches Sortiment an Zubehörteilen wie Runddüsen, Flachdüsen, Gewindeanschlüsse, Y-Verteilern, T-verteilern, Abstellhähnen, etc..

Die Cool-Line Produkte werden aus hochwertigem Kunststoffgranulat gefertigt.

Cool-Line-Module halten auch bei höherer Druckbelastung stand und gewährleisten die Richtungsstabilität des Flüssigkeitsstrahls, dadurch dass die Module eng ineinander verrastet sind.

Ohne Adapter zu 80% der herkömmlichen Systeme kompatibel.

3. Artikelnummern und technische Daten



Kühlmittel-Gelenkschlauchsystem - Cool-Line 1/4" (NW 6) PN 6

Werkstoff: POM

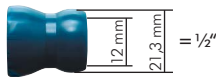
Durchfluss: bis 15,4 l/min.

Verwendung: Dieses System eignet sich zum Durchleiten von Petroleumprodukten, Kühlmitteln, Chemikalien sowie Dielektrikum von Errodiemaschinen.

Kompatibel zu den Systemen: Flexoline, Hydra, Kümli, Loc-Line und Ossmann

Teilkompatibel zu den Systemen: Snaploc, Lubecool, Vario und Maxiflex

Typ	Beschreibung	Bild
CLS 141-SET	Set: 2 Gelenkschlauchstücke: 2 x 140 mm=280 mm (2 x 10 Module) 2 Gewindeanschlüsse (1 x R 1/8", 1 x R 1/4") 3 Runddüsen (1,6 mm, 3,2 mm und 6,4 mm) 1 Flachdüse 24 mm breit (innen)	1
CLS 141-MAG 1	Set mit Magnetteuf: 1 Gelenkschlauch (16 Module) mit Gewindestück R 1/4" 1 Runddüse (6,4 mm) 1 Magnetteuf mit Kugelhahn und 13 mm Schlauchanschluss	2
CLS 141-MAG 2	Set mit Magnetteuf: 2 Gelenkschlauchstücke (13 Module) 2 Flachdüsen 24 mm breit (innen) 1 Y-Verteiler mit Gewindestück R 1/4" 1 Magnetteuf mit Kugelhahn und 13 mm Schlauchanschluss	3
CLS 141	Gelenkschlauchstück 140 mm (10 Module)	
CLS 141-GS18	Gewindestück R 1/8"	4
CLS 141-GS14	Gewindestück R 1/4"	4
CLS 141-RD16	Runddüse 1,6 mm Ø (innen)	5
CLS 141-RD32	Runddüse 3,2 mm Ø (innen)	5
CLS 141-RD64	Runddüse 6,4 mm Ø (innen)	5
CLS 141-FD24	Flachdüse 24 mm breit (innen)	6
CLS 141-FD30	Flachdüse 30 mm breit (innen)	6
CLS 141-FDL16	Flachdüse 16 Loch	6
CLS 141-Y	Y-Verteiler	7
CLS 141-T	T-Verteiler	8
CLS 141-L	Winkelanschluss	9
CLS 141-MU	Muffe	10
CLS 141-KHS	Absperrhahn beiderseits mit Gelenkschlauchanschluss	11
CLS 141-KHG	Absperrhahn mit Gelenkschlauchanschluss und Gewinde R 1/4"	11
CLS 141-RUCK	Rückschlagventil für Gelenkschlauch	
CLS 141-ZANGE	Montagezange für Gelenkschlauch 1/4"	12



Kühlmittel-Gelenkschlauchsystem - Cool-Line 1/2" (NW 12) PN 6

Werkstoff: POM

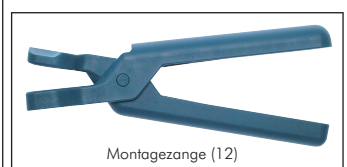
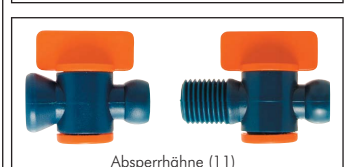
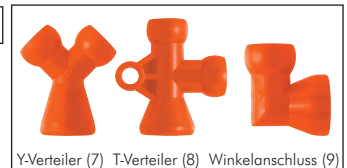
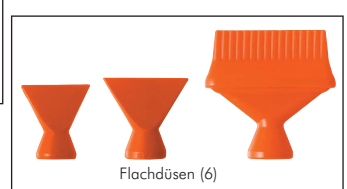
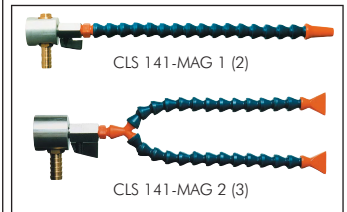
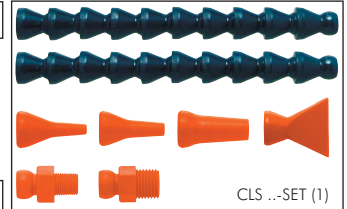
Durchfluss: bis 28,8 l/min.

Verwendung: Dieses System eignet sich zum Durchleiten von Petroleumprodukten, Kühlmitteln, Chemikalien sowie Dielektrikum von Errodiemaschinen.

Kompatibel zu den Systemen: Flexoline, Hydra, Kümli, Loc-Line und Ossmann

Teilkompatibel zu den Systemen: Snaploc, Lubecool, Vario und Maxiflex

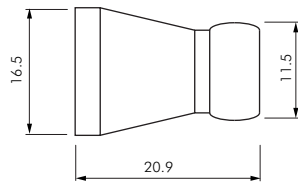
Typ	Beschreibung	Bild
CLS 121-SET	Set: 2 Gelenkschlauchstücke 2 x 130 mm=260 mm (2 x 5 Module) 2 Gewindeanschlüsse (1 x R 3/8", 1 x R 1/2") 3 Runddüsen (6,4 mm, 9,5 mm und 12,7 mm) 1 Flachdüse 32 mm breit (innen)	1
CLS 121	Gelenkschlauchstück 130 mm (5 Module)	
CLS 121-GS38	Gewindestück R 3/8"	4
CLS 121-GS12	Gewindestück R 1/2"	4
CLS 121-RD64	Runddüse 6,4 mm Ø (innen)	5
CLS 121-RD95	Runddüse 9,5 mm Ø (innen)	5
CLS 121-RD127	Runddüse 12,7 mm Ø (innen)	5
CLS 121-FD32	Flachdüse 32 mm breit (innen)	6
CLS 121-FD47	Flachdüse 47 mm breit (innen)	6
CLS 121-FD60	Flachdüse 60 mm breit (innen)	6
CLS 121-Y	Y-Verteiler	7
CLS 121-T	T-Verteiler	8
CLS 121-L	Winkelanschluss	9
CLS 121-MU	Muffe	10
CLS 121-YR	Y-Reduzierung (1 x 1/2" --> 2 x 1/4")	7
CLS 121-KHS	Absperrhahn beiderseits mit Gelenkschlauchanschluss	11
CLS 121-KHG	Absperrhahn mit Gelenkschlauchanschluss und Gewinde R 1/2"	11
CLS 121-ZANGE	Montagezange für Gelenkschlauch 1/2"	12



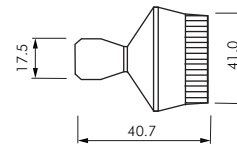
4. Abmessungen

4.1 CLS 141 ...

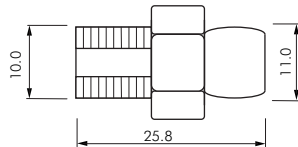
CLS 141



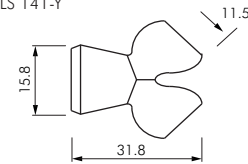
CLS 141-FDL16



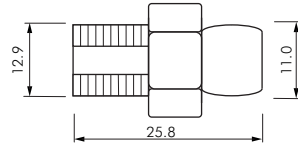
CLS 141-GS18



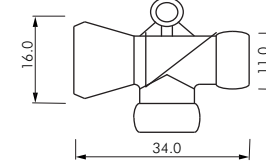
CLS 141-Y



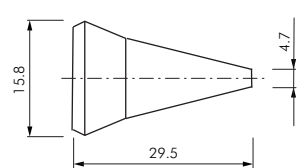
CLS 141-GS14



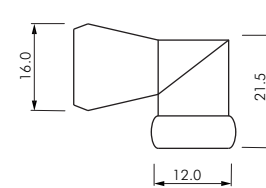
CLS 141-T



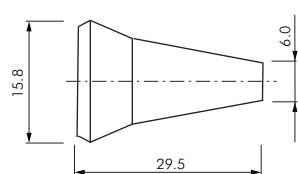
CLS 141-RD16



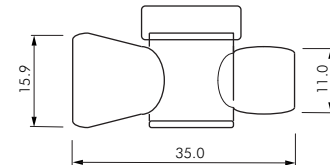
CLS 141-L



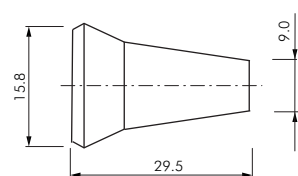
CLS 141-RD32



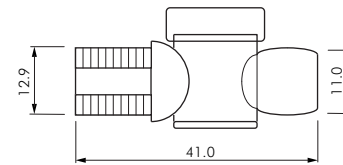
CLS 141-KHS



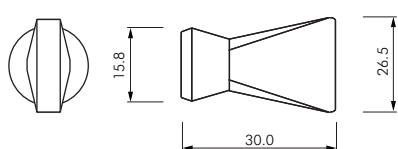
CLS 141-RD64



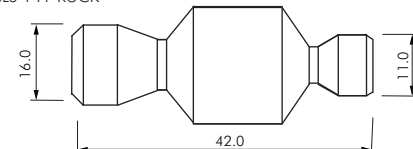
CLS 141-KHG



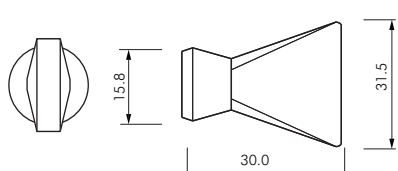
CLS 141-FD24



CLS 141-RUCK



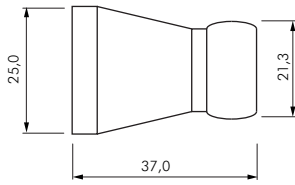
CLS 141-FD30



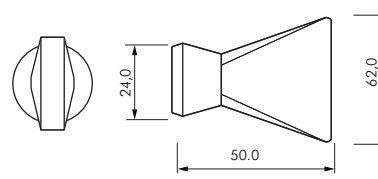
Alle Angaben verstehen sich als unverbindliche Richtwerte! Für nicht schriftlich bestätigte Datenauswahl übernehmen wir keine Haftung. Druckangaben beziehen sich, soweit nicht anders angegeben, auf Flüssigkeiten der Gruppe II bei +20°C.

4.2 CLS 121 ...

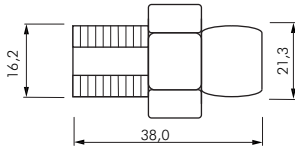
CLS 121



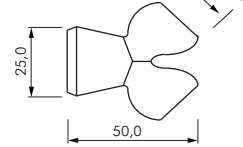
CLS 121-FD60



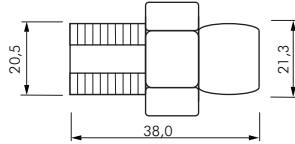
CLS 121-GS38



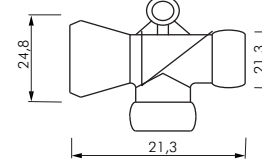
CLS 121-Y



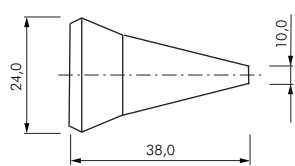
CLS 121-GS12



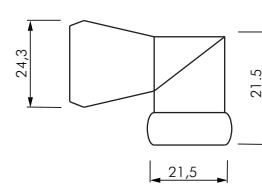
CLS 121-T



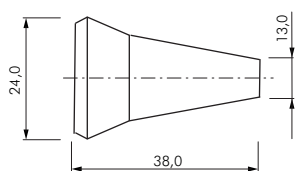
CLS 121-RD64



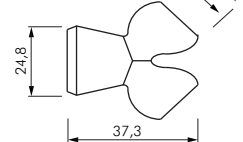
CLS 121-L



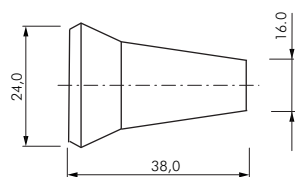
CLS 121-RD95



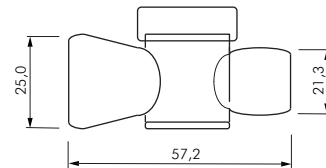
CLS 121-YR



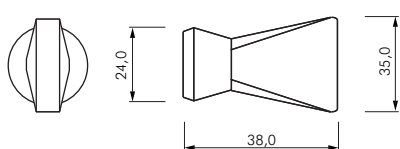
CLS 121-RD127



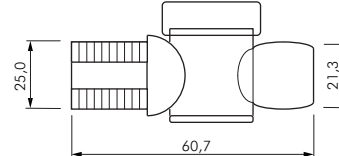
CLS 121-KHS



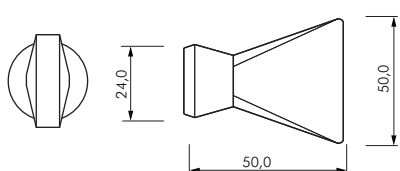
CLS 121-FD32



CLS 121-KHG



CLS 121-FD47



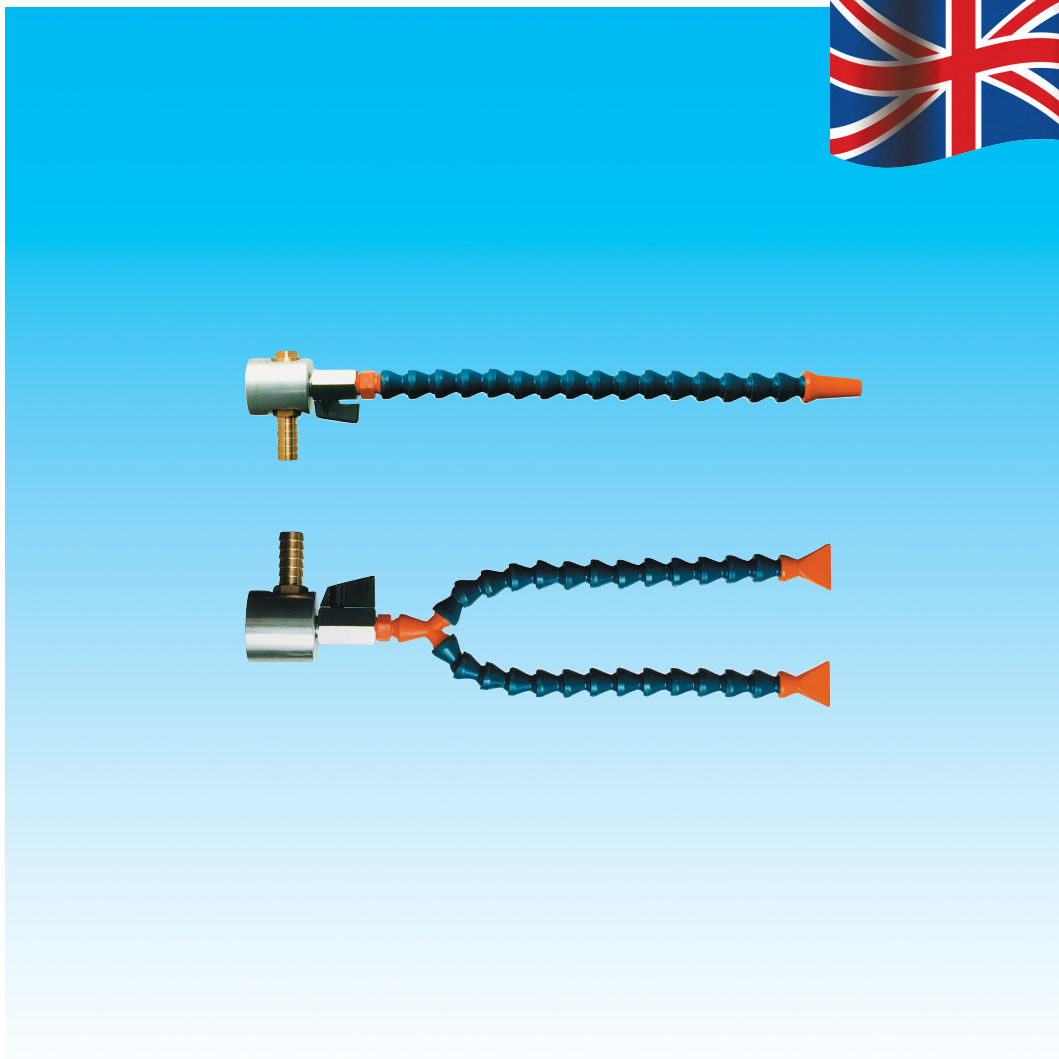
Alle Angaben verstehen sich als unverbindliche Richtwerte! Für nicht schriftlich bestätigte Datenauswahl übernehmen wir keine Haftung. Druckangaben beziehen sich, soweit nicht anders angegeben, auf Flüssigkeiten der Gruppe II bei +20°C.

Documentation

Adjustable coolant hose system

- Cool Line

- Type CLS ... -



1. Content

1. Content	1
2. Description	1
3. Articulenumbers and technical Data	2
3.1 Type CLS 141	2
3.2 Type CLS 121	2
4. Dimensions	3
4.1 Type CLS 141	3
4.2 Type CLS 121	4

2. Description

This system is suitable for conducting petroleum products, coolants, chemicals and dielectric of EDM machines.

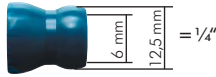
Cool Line comprises an extensive range of accessories and parts such as round nozzles, flat nozzles, threaded screw connections, Y distributors, Y distributors, shutoff valves, etc..

Cool Line products are made of high-quality plastic pellets, which makes them more resistant.

Cool Line Modules withstand even higher pressure loads and ensure directional stability of the liquid jet as the modules snap into one another so tightly.

The Cool Line System is compatible with 80% of conventional systems without any adapters.

3. Articulenumbers und technical data



Adjustable coolant hose - Cool-Line 1/4" (NW 6)

PN 6

Materials: POM

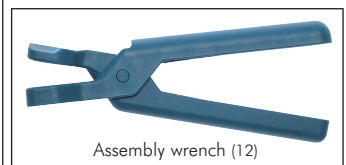
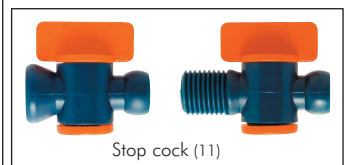
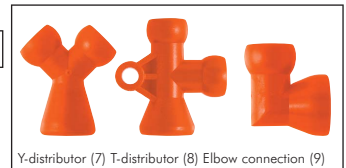
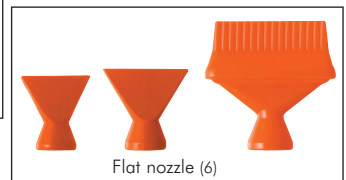
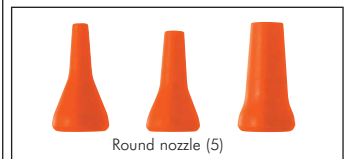
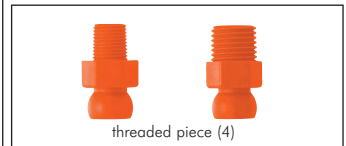
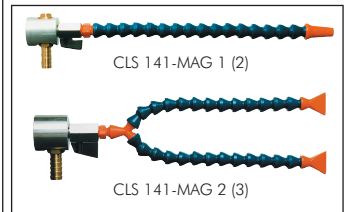
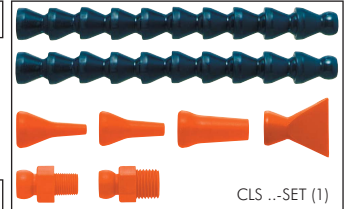
Flow: up to 15,4 l/min.

Suitable: This system is suitable for conducting petroleum products, coolants, chemicals and dielectric of EDM machines.

Compatible with the systems: Flexoline, Hydra, Kümli, Loc-Line und Ossmann

Parts compatible with the systems: Snaploc, Lubecool, Vario und Maxiflex

Type	Description	Image
CLS 141-SET	Set: 2 adjustable coolant hose pieces: 2 x 140 mm = 280 mm (2 x 10 modules) 2 thread connections (1 x R 1/8", 1 x R 1/4") 3 round nozzles (1,6 mm, 3,2 mm and 6,4 mm) 1 flat nozzle 24 mm wide (inside)	1
CLS 141-MAG 1	Set with magnetic foot: 1 adjustable coolant hose (16 modules) with threaded piece R 1/4" 1 round nozzle (6, 4 mm)	2
CLS 141 -MAG 2	Set with magnetic foot: 2 adjustable coolant hose pieces (13 modules) 2 flat nozzles 24 mm wide (inside) 1 Y distributor block with threaded piece R 1/4" 1 magnetic foot with ball valve and 13 mm hose connection	3
CLS 141	Adjustable coolant hose piece 140 mm (10 modules)	
CLS 141-GS18	threaded piece R 1/8"	4
CLS 141-GS14	threaded piece R 1/4"	4
CLS 141-RD16	Round nozzle with 1.6 mm Ø (inside)	5
CLS 141-RD32	Round nozzle with 3.2 mm Ø (inside)	5
CLS 141-RD64	Round nozzle with 6.4 mm Ø (inside)	5
CLS 141-FD24	Flat nozzle 24 mm wide (inside)	6
CLS 141-FD30	Flat nozzle 30 mm wide (inside)	6
CLS 141-FDL16	16-hole flat nozzle	6
CLS 141-Y	Y-distributor	7
CLS 141-T	T-distributor	8
CLS 141-L	Elbow connection	9
CLS 141-MU	Sleeve	10
CLS 141-KHS	Stop cock with adjustable coolant hose connection on both sides	11
CLS 141-KHG	Stop cock with adjustable coolant hose connection and thread R 1/4"	11
CLS 141-RUCK	Check valve for adjustable coolant hose	
CLS 141-ZANGE	Assembly wrench for adjustable coolant hose 1/4"	12



Adjustable coolant hose - Cool-Line 1/2" (NW 12)

PN 6

Materials: POM

Flow: up to 28,8 l/min.

Suitable: This system is suitable for conducting petroleum products, coolants, chemicals and dielectric of EDM machines.

Compatible with the systems: Flexoline, Hydra, Kümli, Loc-Line und Ossmann

Parts compatible with the systems: Snaploc, Lubecool, Vario und Maxiflex

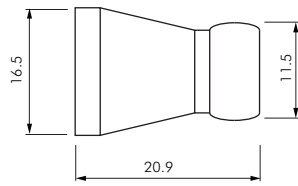
Type	Description	Image
CLS 121-SET	Set: 2 adjustable coolant hose pieces 2 x 130 mm = 260 mm (2 x 5 modules) 2 thread connections (1 x R 3/8", 1 x R 1/2") 3 round nozzles (6,4 mm, 9,5 mm and 12,7 mm) 1 flat nozzle 32 mm wide (inside)	1
CLS 121	Adjustable coolant hose piece 130 mm (5 modules)	
CLS 121-GS38	threaded piece R 3/8"	4
CLS 121-GS12	threaded piece R 1/2"	4
CLS 121-RD64	Round nozzle with 6.4 mm Ø (inside)	5
CLS 121-RD95	Round nozzle with 9.5 mm Ø (inside)	5
CLS 121-RD127	Round nozzle with 12.7 mm Ø (inside)	5
CLS 121-FD32	Flat nozzle 32 mm wide (inside)	6
CLS 121-FD47	Flat nozzle 47 mm wide (inside)	6
CLS 121-FD60	Flat nozzle 60 mm wide (inside)	6
CLS 121-Y	Y-distributor	7
CLS 121-T	T-distributor	8
CLS 121-L	Elbow connection	9
CLS 121-MU	Sleeve	10
CLS 121-YR	Y-Reducer (1 x 1/2" --> 2 x 1/4")	7
CLS 121-KHS	Stop cock with adjustable coolant hose connection on both sides	11
CLS 121-KHG	Stop cock with adjustable coolant hose connection and thread R 1/2"	11
CLS 121-ZANGE	Assembly wrench for adjustable coolant hose 1/2"	12

No responsibility is taken for the correctness of this information.

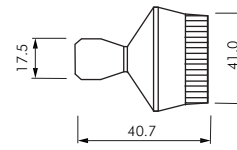
4. Dimensions

4.1 CLS 141 ...

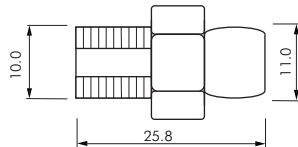
CLS 141



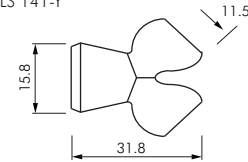
CLS 141-FDL16



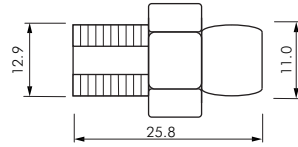
CLS 141-GS18



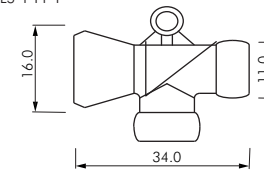
CLS 141-Y



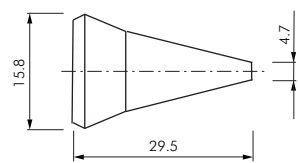
CLS 141-GS14



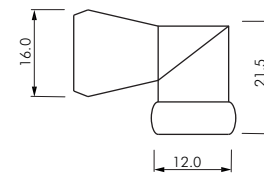
CLS 141-T



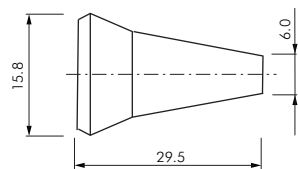
CLS 141-RD16



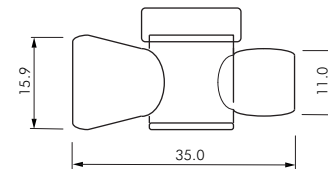
CLS 141-L



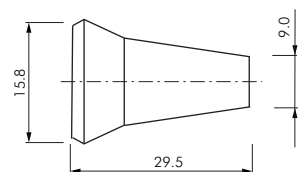
CLS 141-RD32



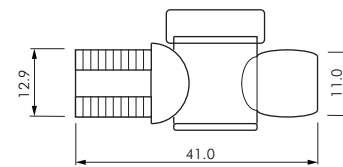
CLS 141-KHS



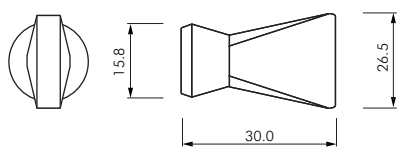
CLS 141-RD64



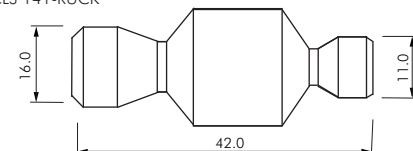
CLS 141-KHG



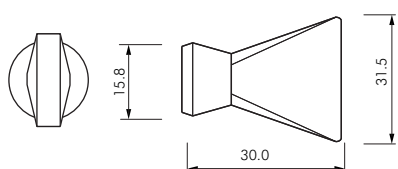
CLS 141-FD24



CLS 141-RUCK



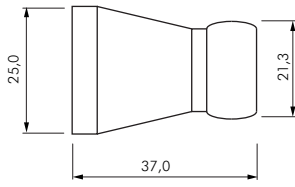
CLS 141-FD30



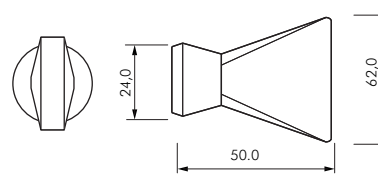
No responsibility is taken for the correctness of this information.

4.2 CLS 121 ...

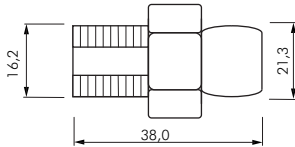
CLS 121



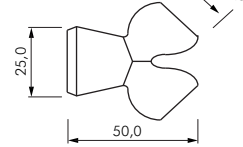
CLS 121-FD60



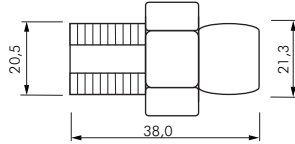
CLS 121-GS38



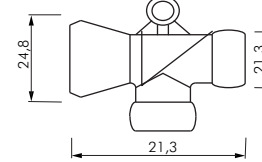
CLS 121-Y



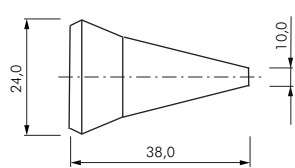
CLS 121-GS12



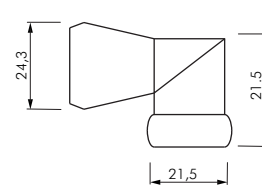
CLS 121-T



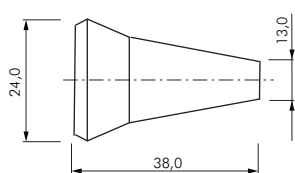
CLS 121-RD64



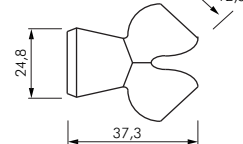
CLS 121-L



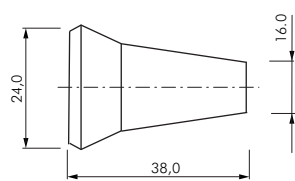
CLS 121-RD95



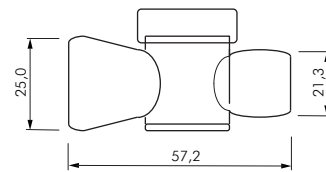
CLS 121-YR



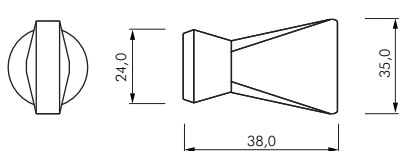
CLS 121-RD127



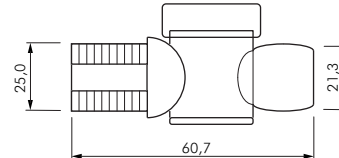
CLS 121-KHS



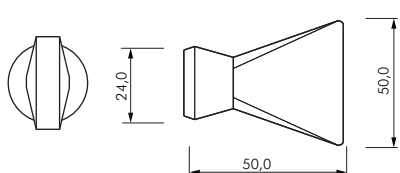
CLS 121-FD32



CLS 121-KHG



CLS 121-FD47



No responsibility is taken for the correctness of this information.